

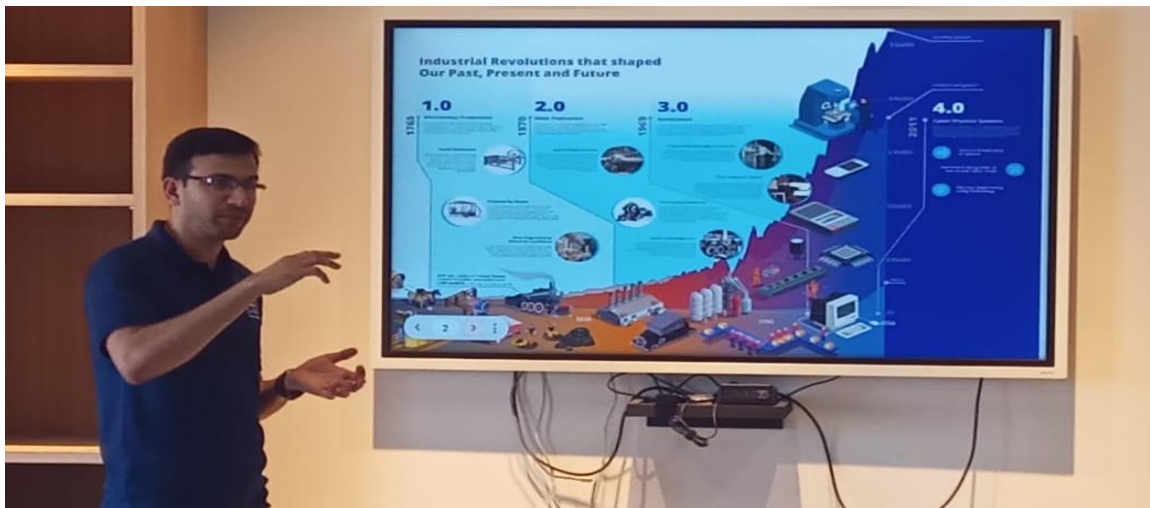
7.3 Institutional Distinctiveness: (1000 words)

7.3.1 Portray the performance of the Institution in one area distinctive to its priority and thrust (1000 words)

THE ART OF BUILDING A WINNING KNOWLEDGE BASE THROUGH INDUSTRY SUPPORT LABORATORY

Salient Features (C4I4 lab – Centre for Industry 4.0 Laboratory)

We are highly privileged to have (C4I4 centre for industry 4.0 in Indra Ganesan College of Engineering that adds another feather to our crown sponsored by Ministry of Heavy Industries, Central Government of India. Being the sole institution in South India, especially in Tamilnadu, to possess this cutting-edge lab underscores the exceptional status and commitment to staying at the forefront of technological advancements. This initiative not only enhances the educational experience for students but also contributes to the broader landscape of industry and innovation.





TVS Lab

Here in this mode all our students are exposed to enterprise and experience and undergo the project that fit to the reality and bring change and solution to the real life problems through their project and intern they learn and serve the society side by side, by keeping this as a motto this was strictly practiced in our to flourish the students who tend to help the society in future with their education. The commendable to learn about the hands-on and practical approach your institution adopts to foster experiential learning. Providing students with exposure to enterprise and real-life projects not only enhances their skills but also instills a sense of responsibility and purpose. The emphasis on projects that address real-life problems reflects a commitment to creating meaningful and impactful educational experiences. This approach not only equips students with the knowledge and skills needed for their future careers but also encourages them to contribute positively to society. Our institution's dedication to the motto of learning, serving the society, and bringing about positive change through education is truly inspiring. Keep up the excellent work in nurturing students who are not only academically proficient but also socially responsible.



Seed Lab

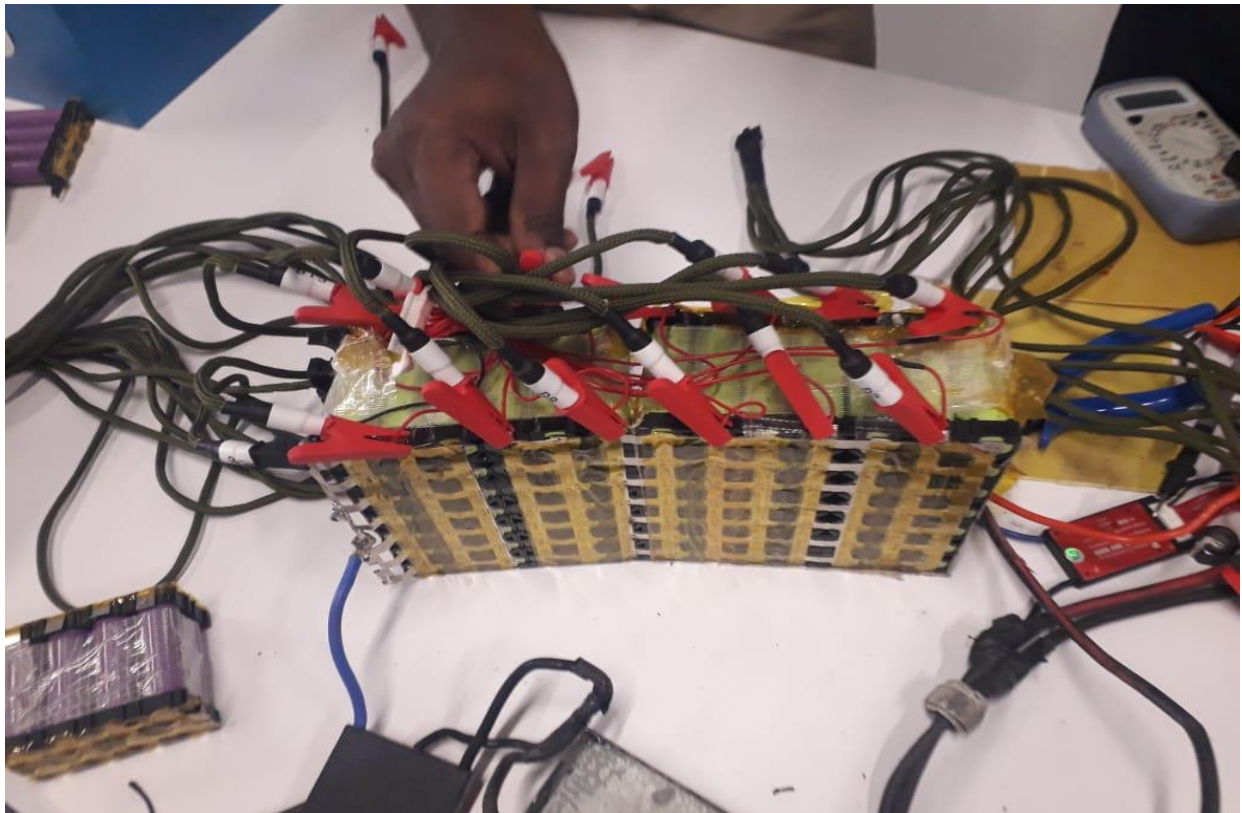
An Intra - disciplinary lab in these students are focused to learn and experience learning in more than one discipline and can choose specialization and work in this integrated lab and can improve their skill and this platform is provided by our institution to the students through seed lab. The flexibility for students to choose specializations and work within this integrated lab not only encourages interdisciplinary collaboration but also fosters a holistic learning environment. This forward-looking platform enables students to enhance their skills and knowledge, preparing them for the dynamic challenges of the future. IGCE has providing such a valuable and enriching opportunity for students through the Seed Lab.



Centre for Excellence

The college has an innovative centre for excellence that provides engineering students to learn and equip themselves within the campus by offering continuous training, line projects knowledge up gradation etc., for both students and faculty. These centre help students in internships and recruitment companies also gain a lot through this initiative as this becomes a good testing ground for experimenting with new ideas, processes and technology before implementation and provides a wholesome development that requires to meet today's need is given in our campus. We are providing a dynamic platform for engineering students and faculty.

The emphasis on continuous training, real-world projects, and knowledge upgrading showcases a commitment to fostering a learning environment that goes beyond traditional academic boundaries. The dual focus on both students and faculty reflects a holistic approach to education and professional development. The support provided to students for internships and recruitment not only benefits them but also becomes a valuable testing ground for companies exploring new ideas, processes, and technologies.





Alumni Association

Inviting esteemed alumni to reunite and engage with current students is a valuable initiative that can greatly enrich the learning experience and support the career development of students. Here's how this practice benefits both current students and alumni. Alumni can share firsthand insights into current trends, challenges, and opportunities in various industries. This exposure helps students stay updated with the latest developments and prepares them for the realities of the workforce. Interacting with alumni provides students with networking opportunities that can be beneficial for internships, mentorship, and future job placements. Building connections with successful professionals can open doors to career opportunities and valuable advice.

Placement and Students Development

Continuous self-growth is our focus, emphasizing soft skills like teamwork, analytical reasoning, and professional excellence. Our ICT program covers Adobe Photoshop, MatLab, web testing, CAD simulation, and Google Workspace integration. The Training and Placement Cell readies students for industry needs with career guidance, UPSC/TNPSC insights, and skill enhancement sessions by experts from various organizations, like the District Employment Office, Ministry of Finance Department of Revenue, IIT Madras, IAS academies, and others. They offer aptitude, group discussions, technical skills, and mock interview training.

We have signed Memorandum of Understanding (MoU) with various industries, organizations and companies for mutual resource and knowledge sharing through internship, seminars, value added courses and certificate courses. Our faculty team carryout many Consultancy Projects with nearby industries and institutions by providing solution to their real time and day to day problems. Our Faculty Members publish their Research works in reputed National and International Conference, UGC CARE, Scopus and SCI Indexed Journals.

Student Welfare

IGCE commitment to creating a safe and supportive environment for students is evident through the implementation of anti-ragging measures and the establishment of grievance cells and internal complaints committees. Here's a breakdown of how these initiatives contribute to ensuring a secure learning environment.

➤ **Anti-Ragging Committee**

By implementing anti-ragging policies and establishing mechanisms such as grievance cells and internal complaints committees, your institution sends a clear message that any form of harassment or misconduct will not be tolerated. Providing avenues for students to report incidents of ragging or harassment promotes transparency, accountability, and a culture of mutual respect and safety on campus.

➤ **Grievance Cell and Internal Complaints Committee**

These bodies play a crucial role in addressing a wide range of campus issues, including harassment, discrimination, and other grievances. By comprising faculty members and counselors, they ensure that complaints are handled sensitively and impartially. Prompt

resolution of concerns and fair treatment of all parties involved contribute to fostering trust and confidence in the institution's systems and processes.

➤ **Collection of Complaints and Prompt Resolution**

Utilizing suggestion boxes and other channels for collecting complaints allows students to voice their concerns anonymously if needed, encouraging them to come forward without fear of retaliation. Addressing complaints promptly and effectively demonstrates the institution's commitment to maintaining a safe and supportive learning environment and reinforces the importance of accountability and transparency in handling.

➤ **Assistance with Scholarship Applications**

Supporting students from diverse backgrounds in applying for scholarships alleviates financial burdens and ensures equal access to educational opportunities. Initiatives aimed at helping students apply for scholarships, such as Post Metric, First Graduate, Government School Students', and National scholarships, demonstrate the institution's commitment to promoting equity, diversity, and inclusion. By relieving financial stressors, students can focus more on their studies and academic pursuits.

Community Engagement and Service

The collaboration between NSS (National Service Scheme), RRC (Red Ribbon Club), and YRC (Youth Red Cross) in conducting a diverse range of voluntary activities is commendable and contributes significantly to community welfare and social development.

We implement proper waste segregation and ethical disposal methods at our institution. Emphasizing a Green Campus initiative, we aim to plant more trees to reduce carbon dioxide emissions. We've raised awareness among students and faculty about the ban on non-disposable plastic use, striving for a plastic-free campus

Efforts to maintain academic excellence and establish credibility in teaching methods are crucial for any educational institution, especially one focused on producing top-tier technical professionals like IGCE.